



ALUPURE
ALUMINIUM
SYSTEMS

ELEGANCE | EXCELLENCE | ENDURANCE





**PEOPLE
PASSION
PROFILES**

AluPure, a German Brand owned by profine GmbH – one of the strongest and most rapidly growing Aluminium Window and Door Systems in India. With a rich legacy and global expertise in advanced window and door systems, profine GmbH has been instrumental in developing and supplying world-class and modern window and door systems to the Indian market for more than two decades. It has come a long way and established its strong presence through a strong network of channel partners across India.

Customer Focus

We value our customers and are committed to offering the most innovative and quality products and services in a minimum lead time with high competence. We believe in sustainable growth and have been successful in establishing a robust and durable business relationship with customers based on trust and human values. The growing portfolio of our customers is a testimony to the philosophy and work ethics we have developed i.e. innovation, quality, and responsibility towards the environment. Our wide range of advanced window and door systems is the perfect complement to modern architecture and meets the ever-changing requirements of customers with promptness and customized solutions.

Quality Commitment & Innovation

AluPure aluminium systems are known for their quality and German precision. The rich legacy of profine GmbH in the fenestration industry has been the success mantra of AluPure aluminium window and door systems. The systems have been developed by the experienced R&D team of engineers at the German Headquarter and India. These modern systems have successfully passed performance quality tests as per EN12207, EN12208 and EN12210 standards for air infiltration, static water penetration and structural performance.

AluPure believes in innovation and continuous improvement in its growing product range, therefore investment commitment is quite evident. To remain steps ahead of the competition, AluPure has been investing in R&D, infrastructure expansion & technical skill development. As a result, AluPure has been successful in introducing new and innovative window and door systems for all market segments at regular intervals, which shows how AluPure has been responding to the growing market demand for its products.



ALUPURE ALUMINIUM SYSTEMS

Made with German precision, AluPure has been successful in bringing a fresh outlook to the Indian fenestration Industry. Its innovative and elegant range of aluminium window and door systems is a paradigm of quality and durability. AluPure is a trendsetter and offers various styles and shapes in an unlimited number of colour options. The AluPure systems are timeless, individual and highly convincing with many positive properties. The profiles are extremely durable and require minimal maintenance over their long service life. Moreover, AluPure Aluminium Systems are high in quality, colourfast and 100% recyclable. Thanks to their high stability and load-bearing capacity, these systems can be produced in extraordinary sizes with various glass options.

Advantages & Benefits

AluPure aluminium window and door systems offer the highest level of quality and security. The design aspects of these systems ensure perfect functionality at all times while keeping the aesthetics and surface finish intact for longer service life. Their weather resistance attribute lends them long-term durability with minimal to no maintenance requirement. They fulfill virtually all architectural challenges affecting colour, shape and design.



HIGH
QUALITY



LOW
MAINTENANCE



WEATHER
PROOF



HIGH WIND
RESISTANCE



100%
RECYCLABLE



CHOICE
OF COLOURS

Casement Windows

Are you looking for new windows for your home or office? Look no further than our high-quality advanced, stylish and resilient AluPure Aluminium Casement Window Systems. These systems are a popular choice among homeowners and architects alike and for good reason.

Our Systems are designed with the highest quality materials and cutting-edge technology to ensure maximum durability with minimal care. These systems offer an elegant and modern look that can enhance the aesthetic appeal of any property.

Incredibly easy to use - simply push or pull the window to open inside or outside and pull in or push it back to close. They are also highly functional and practical, providing excellent insulation, security, and ventilation.

If you're looking for a reliable and stylish casement window solution, AluPure Aluminium Systems just be the perfect choice for you.

Casement Doors

The door reflects the style and aesthetics of the building, communicating to visitors their first impression of those inside. Those seeking a stylish, modern and impressive door for their home or office, can vouch for AluPure Aluminium Casement Door System.

These casement doors are resilient and can withstand even the harshest weather conditions making them resistant to rust, corrosion, and fading, making them a long-lasting choice for any property, which means they can maintain their appearance and functionality for many years to come. Another benefit of aluminium casement doors is their security features. The multi-point locking system and strong frames with special glass make it difficult for intruders to break in.

Providing peace of mind for homeowners in terms of style, aluminium casement doors come in a variety of designs and finishes, ensuring that they can complement any property's aesthetic. They can be customized with different glass and colour options, allowing for a unique and personalized look.



Inward Opening



Outward Opening

APC 46 Window System



Inward Opening

Outward Opening

APC 46 Door System

A centre sealed casement window system	A centre sealed casement door system
Inward / outward opening	Inward / outward opening
Maximum sash panel size 0.70m (w) x 1.5m (h)	Maximum sash panel size 1.0m (w) x 2.4m (h)
Wind load capacity upto 2 KPA	Wind load capacity upto 2 KPA
Elegant, modern window geometry with convex design sash	Elegant, modern residential door geometry with convex residential door design sash
Range includes single panel opening window, double panel openable window, Tilt & Turn, French window, top hung and fix window	Extra wide base profile
Can accommodate glass thickness from 5-24 mm	Can accommodate glass thickness from 5-24 mm
Lasting value thanks to durable quality of the highest level	Low threshold door solution minimize the bottom frame
Single and Multiple locking to ensure higher security	Single and Multiple locking to ensure higher security

Sliding Windows and Doors

Comfort has many faces, like the way AluPure sliding systems opened and closed seamlessly. Its precision fits make it extremely quiet and easy to use. Even with large glazed areas, the AluPure profiles ensure that the sliding elements move in nearly perfect silence, a result of the window and door sashes high stability. One of the main benefits of aluminium sliding doors is their versatility. They can be used in a wide range of applications, including bedrooms, living rooms, patios, and balconies. They are perfect for spaces where there is limited clearance, as they do not require a large swing radius like traditional hinged doors.

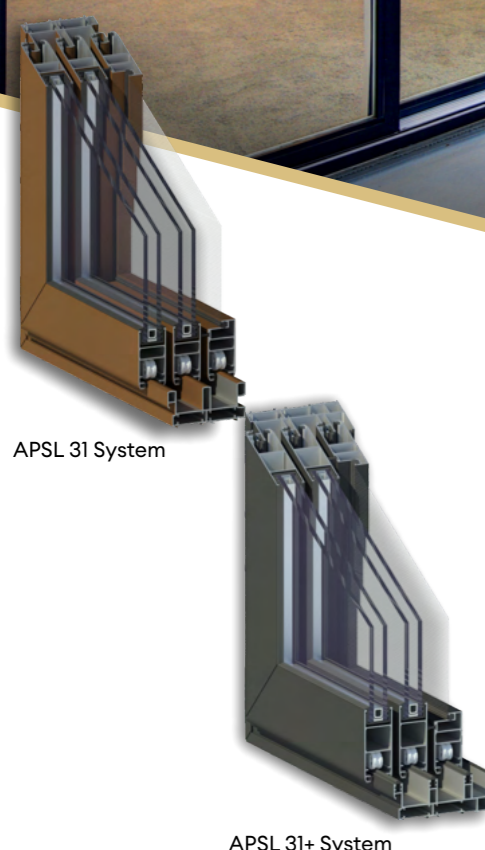
Optionally the sliding unit can be equipped with an insect screen, using a special sliding frame. This insect screen offers effective and reliable protection against vermin, mosquitoes, flies and other insects.

AluPure Aluminium Sliding Systems are an excellent choice for anyone looking for a versatile, durable, and stylish window and door solution.

Sliding Folding Door

Elegance, Wider Opening, Space Saving and Sturdy, are a few of the advantages of the uniquely designed AluPure modern Sliding Folding Door System. They have increasingly become popular for the areas which require maximum opening to convert two spaces into one and vice versa, especially in the case of a big ballroom of a hotel, wide balconies and living rooms having access to open area i.e. swimming pool, garden area etc. The folding and sliding mechanism allow the door panels to be folded and slide away on one side, creating a fully open space to make entry or exit quite comfortable in case of large gatherings. These doors are practical and smooth to operate and add aesthetic benefits to both commercial and residential spaces.

In terms of style, AluPure aluminium sliding folding doors come in multiple colour options, ensuring they can complement any property's aesthetic. They can be customized with different glass options, colours, and hardware, allowing for a unique and personalized look.



APSL 31 System

APSL 31+ System

A modular frame system	Frame/ low threshold profile system
Sliding system offers two track, three track and four track	Can be produced upto 11 panels
Can be produced in two, three, four and six panels	Wind load capacity upto 1.2 KPA
APSL 31 System - Maximum panel size 1.0m (w) x 1.8m (h)	70 mm Frame Depth (Slim Profiles for large glass area)
APSL 31+ System - Maximum panel size 1.2m (w) x 2.4m (h)	Heavy duty sliding folding door, suitable for use in commercial application.
Wind load capacity upto 2 KPA	Four stainless steel wheels in bottom & on top ensures larger door size smooth and consistent operation
Option for fly mesh	System accommodate glass thickness from 8 to 35mm
Can accommodate glass thickness from 5-22 mm	Three point hook locking
Single and Multiple locking to ensure higher security	Anti-finger trapping gasket



APSF 70 System
Sliding Folding Door System

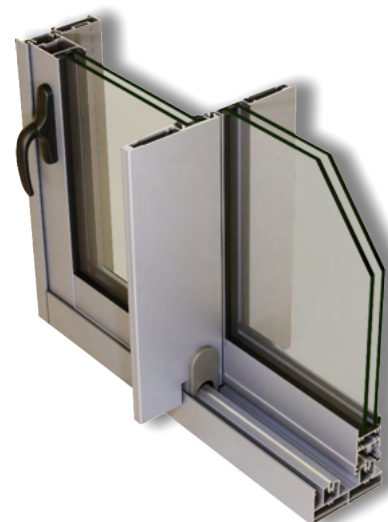
APSL 31 and APSL 31+ System
Sliding Window & Door Systems



Premium Slim Interlock Sliding Door System

Premium, Elegant, Seamless and Slim Design is what defines Opulenz Interlock Sliding Door Systems and makes it a class apart and most popular premium sliding system amongst homeowners, architects and builders. One of the primary benefits of Opulenz premium sliding doors is their sleek design. They feature clean lines and minimalist designs that can complement any property's design and aesthetics. The slim frames, concealed hardware, and large glass panes create a modern and elegant look that adds value to any property.

Opulenz offers maximum access to outdoor living spaces, making them an excellent choice for properties with patios, decks, or balconies without worrying about their performance and maintenance. In terms of security, premium sliding doors are highly secure. They feature multi-point locking systems, strong frames, and security glass that can withstand force and impact. People who are looking to have a wide opening for their balconies in villas and high-rise buildings, these premium doors are the ideal choice for properties looking for maximum security and peace of mind.



OPULENZ
Sliding Door System



Sleek Interlock Sliding Door System

Engineered with German precision, Majestic – the sleek interlock sliding door system is a blend of elegance and innovation. Less visible frame, more glass openings for unobstructed view and contemporary designs, transform your living space into a place you can dream of. The sleekness creates an illusion of no boundary between indoors and outdoors and transforms the space into an impressive property.

The system is being designed in accordance with modern building requirements and varied weather conditions to match the aesthetic desire of all classes. The salient feature and engineering of this system make it an epitome of performance, durability and aesthetics. The system outperforms the performance parameters like high wind load, water penetration and air infiltration which makes it the preferred choice amongst architects, builders and fenestration consultants. The flexibility of height and width further enhances its usability for any premises be it residential apartments, villas, commercial complexes, hotels and institutions.



MAJESTIC
Sliding Door System

Maximum panel size 2m (w) x 4m (h)	Maximum panel size 1.5m (w) x 3m (h)
Can be produced upto 6 panels	Can be produced upto 6 panels
Robust highly stable can bear wind load upto 3 KPA	Wind load capacity upto 2.5 KPA
Specially designed rollers can bear the load of upto 400 kg per panel	Sightline or face width is 33 mm
Glass thickness SG and DGU from 8 - 36 mm	Rollers can bear the load upto 300 kg per panel
Interlock width, from 22-25 mm	Glass thickness SG and DGU from 5-32 mm
Corner opening is also available	2 and 3 track frame with SS guide rail and inside lip with flymesh option
Multiple locking to ensure higher security	Multiple locking to ensure higher security



Premium Casement Door System

A fusion of style, durability and versatility that is perfect for any home. Grande, a premium casement door system, engineered with special attention to the modern architectural style. International quality parameters are being kept at the core of its design which will outperform any weather challenges. With high wind load capacity, water tight design, and various colourfast options, this door is sure to last for years to come.

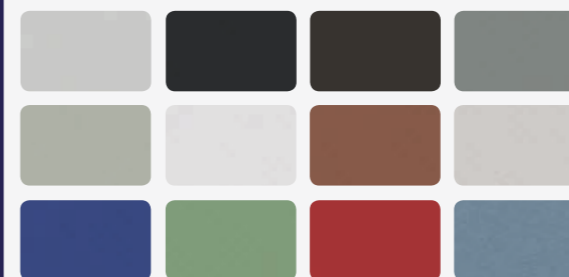
The casement door system has been designed to suit various building designs, be it home, office or any other building. The advantage of this system is its extraordinary size which enhances its usability and allows it to complement buildings of any architectural shape or size, while the robust and elegant design adds a touch of class and attention. This high-performing modern system gives you the option of single-sash, double-openable, fix and openable door to meet the architecture/ interior requirement of your dwelling. If you are looking for an advanced, elegant, robust and high performing door that will stand the test of time, then you can vouch on Grande casement door.



Myriad Colours of Perfection

POWDER FINISHING FOR THE COLOUR YOU WANT

Thanks to the high quality enamelling of the powder finished profiles, the elements of aluminium retain their original brilliance even after many years and do not need a fresh coat of paint. You can choose from the whole RAL palette with over 200 colours. These RAL colours are available in glossy, matt, and textured.



ANODIC FINISHING FOR A BRILLIANT LOOK

The process yields brilliant surfaces and characteristic metallic effects. Anodic finishing is a benefit not only for the look. It also provides long lasting protection against increasingly aggressive environmental effects. Furthermore, anodised surfaces are insensitive to mechanical effects and are easy to clean.



GRANDE
Casement Door System

- Maximum panel size 1.4m (w) x 3m (h)
- Wind load capacity upto 2.5 KPA
- Glass thickness SG and DGU from 5-34 mm
- Inside & Outside open sash option
- Fix, Single and French doors
- Bottom frame/Low threshold profile
- Single and Multiple locking to ensure higher security

A Word of Praise That Matters



Payal Mishra

★★★★★ a year ago

Aluminum windows are a great addition to any home. Price and reliability were the reasons I selected Alupure. They are very affordable and have great follow through. The windows they provided me with are heavy-duty and have long-lasting value. Any homeowner looking for windows should consider Alupure aluminum windows.



Mohit Singh

★★★★★ a year ago

Alupure recently installed new windows that I purchased from them, and I was very impressed with their work. They were true professionals and installed my windows without any problems. My home looks completely refreshed when it's light out and makes me smile everytime I look at the front of my house.



Vanshika Kaur

★★★★★ a year ago

I had a great experience with Alupure. They recently installed new windows that I had purchased from them, and I was very impressed with their work. They were true professionals and installed my windows without any problems. My home looks completely refreshed when it's light out and makes me smile every time I look at the front of my house.



Ankur Jain

★★★★★ a year ago

Alupure Aluminum System Window is a good quality product. Working with last 6 Years. All teams work good.

Reasons to choose AluPure

- Rich legacy of globally renowned profine GmbH behind the system design and quality.
- Systems meet quality parameters as per EN12207, EN12208 and EN12210 standards.
- Wide range of systems for all market segment.
- Unlimited number of colour options to complement the aesthetics of your building.
- One of the most trusted and rapidly growing brands amongst architects, fenestration consultants and developers.
- A strong network of channel partners across India and abroad, ensuring timely delivery, quality fabrication & installation and swift service support.

ELEGANCE
EXCELLENCE
ENDURANCE



profine India Window Technology Pvt. Ltd.

Registered & Corporate Office:
501, 5th Floor, Kailash Building,
26, K.G. Marg, New Delhi 110001, India
Phone: (+91) 11 42368600
☎ (+91) 93113 97008
E-Mail: alupure.india@profine-group.com
website: www.alupure.co.in



profine GmbH

Headquarter:
Zweibrücker Straße 200
D-66954 Pirmasens, Germany
Tel : (+49) 6331 56-0
Fax : (+49) 6331 56-2475
E-Mail: info@profine-group.com
Website: www.profine-group.com

